



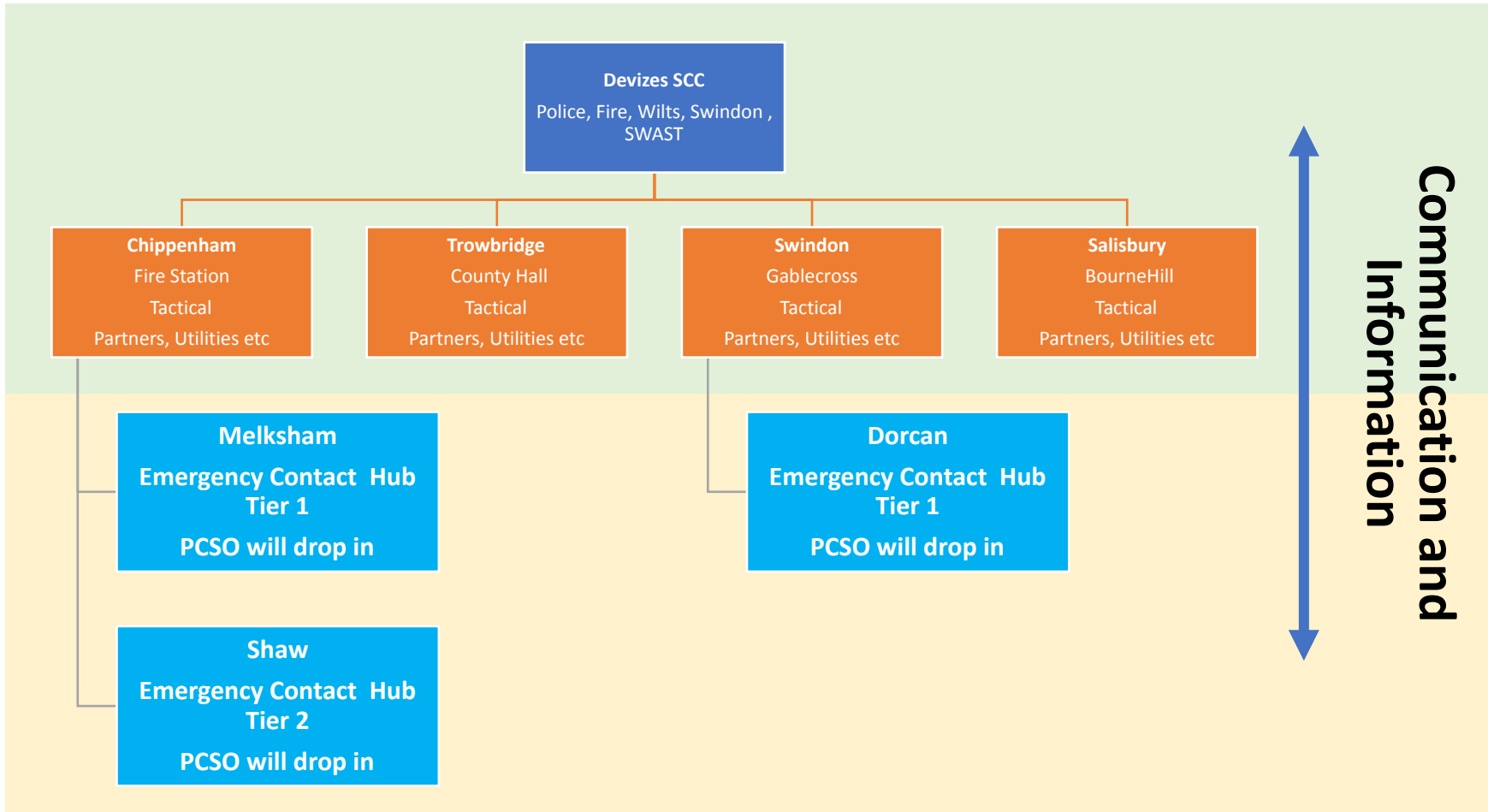
Emergency Contact Hubs



Wiltshire & Swindon Prepared

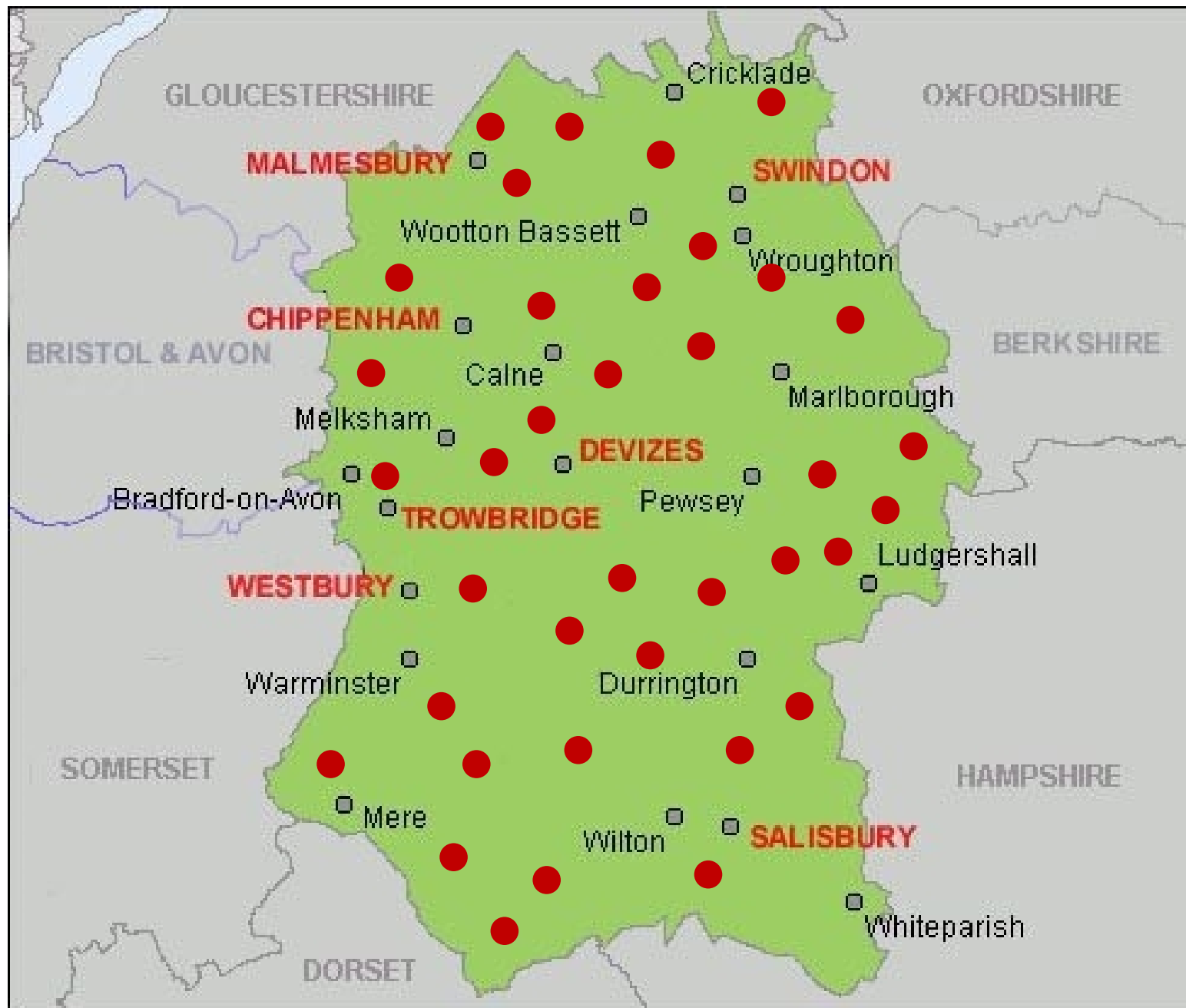
**Camella Town
Chris Manuel**

Emergency Contact Hubs (Buildings)



Communication and Information

- Hubs for information, contact and communications in an Emergency
- Widely recognised in your community
- Supported and driven by the community
- Building your community knowledge and experience





Example Usage – Power Outage

Hubs used for:

- Communication down to community from multi-agency environment
- Communication up from community to multi-agency partners
- Information point for community
- Safe space for community (e.g. warm, welfare, reassurance, information sharing)
- Well publicised in your community
- Your community decides how you want to run this





Benefits

- Being part of the a National community resilience network – but designed to suit yourselves
- Build on your current community resilience structure – where ever you are in that process
- Formalises a process for us to communicate and give information to you and visa versa
- Allows information to be shared between all partners and communities quickly
- Enables you to support your vulnerable people, with access to wider network
- Community Driven, Community Owned, Community Decisions
- Muster provisions



What's Next?

- Let us know if you are interested. The hub concept is in your hands
- Have the conversation in your community, identify which building is best suited to an Emergency Contact hub. Run this alongside what you may already have in place in times of a crisis.
- Look at how you could staff this hub from your community.
- This is not set in stone, this scheme has to flex to meet your needs, if your original choice no longer fits it can be changed. It must work for the community.
- **We will visit your hub to discuss the Emergency Contact Hub, Community Resilience and Training.**
- **We will look at resources and muster provisions on site.**





What we would like from you

Your participation

We want to create a large network covering all of Wiltshire that works for the community and is run by the community

Please get in touch with us to join

wiltshireandswindonprepared@wiltshire.gov.uk